

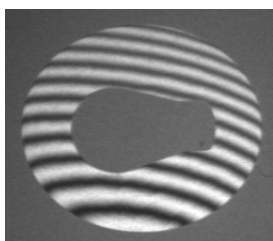
SPI Interferometer for the flatness check of lapped and ground parts



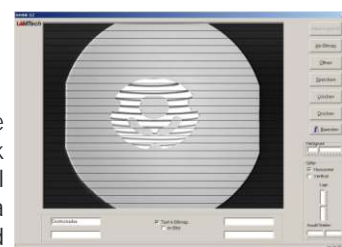
The SPI interferometers are the right choice for the visual flatness check of lapped or ground surfaces which do not show fringe contrast with an optical flat. The special version SPI xs offers a higher sensitivity compared to the SPI standard version. The SPI uses the principle of grazing incidence of light on the surface

and shows light bands of high contrast for rough as well as polished surfaces. For testing, the parts are simply placed on the glass surface on the top side of the SPI. A magnified image of part and fringes is displayed on a monitor. The interpretation of fringes is the same as with an optical flat: straight, parallel and

evenly spaced fringes indicate a high degree of flatness. The SPI interferometers can be placed directly in the production area, right beside the lapping or grinding machine. Documentation of flatness is possible with the optional Intdok program or a video printer.



Interferogram of an Al₂O₃-control wheel, which can be saved as a bitmap by the Intdok Software



Extract of the Evaluation Software Intdok - Presentation of a control wheel overlaid with a horizontal grid

Specification

	SPI 75	SPI 130	SPI xs
Measurement Area (Diameter)	75 mm	130 mm	65 mm (other sizes upon request)
Flatness of Reference Surface	better than 0.15 µm (under constant environmental conditions)		
Dimensions	340 mm x 200 mm x 240 mm	550 mm x 280 mm x 350 mm	340 mm x 200 mm x 240 mm
Weight	9 kg	26 kg	9 kg