

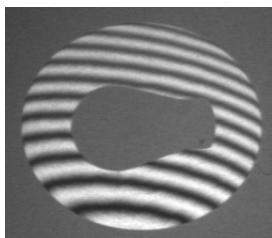
SPI Interferometer for the flatness check of lapped and ground parts



The SPI interferometers are the right choice for the visual flatness check of lapped or ground surfaces which do not show fringes with an optical flat. The SPI uses the principle of grazing incidence of light onto the surface and shows light bands of high contrast for rough as well as polished surfaces. For testing, the parts are simply placed on

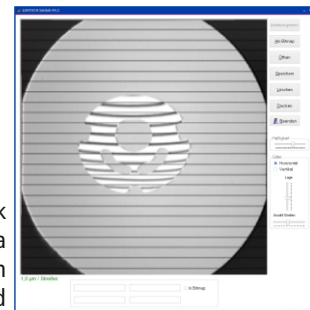
the glass surface on the top side of the SPI. A magnified image of part and fringes is displayed on a monitor or laptop. The interpretation of fringes is the same as with an optical flat: straight, parallel and evenly spaced fringes indicate a high degree of flatness. The SPI interferometers can be placed directly in the production area,

right beside the lapping or grinding machine. Documentation of flatness is possible with the included Intdok program.



Interferogram of an Al₂O₃-regulator disk, which can be saved as a bitmap by the Intdok Software

Evaluation Software Intdok - Presentation of a regulator disk overlaid with a horizontal grid



Specifications

	SPI 75D	SPI 130D
Measurement Area (Diameter)	75 mm	130 mm
Flatness of Reference Surface	better than 0.15 µm (under constant environmental conditions)	
Dimensions (L x W x H)	340 mm x 200 mm x 240 mm	550 mm x 280 mm x 350 mm
Weight	9 kg	26 kg